

Construction Sector VAT Reverse Charge

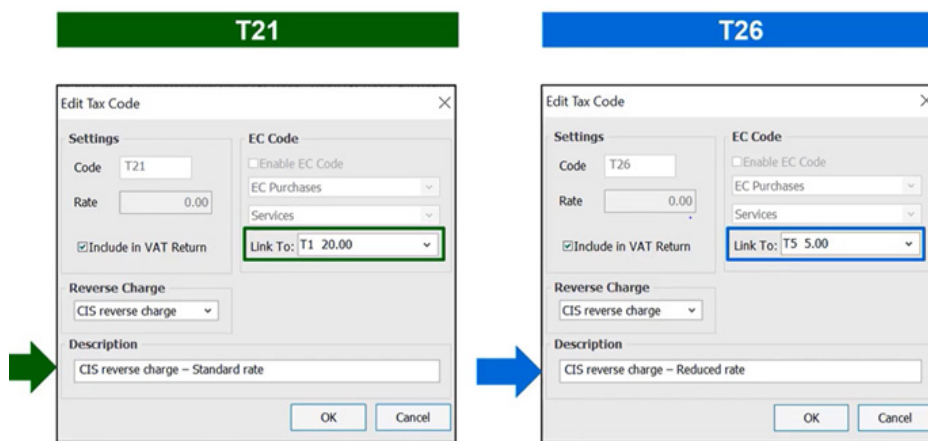
Sage

Sage 50 Cloud Accounts

If the client is using version 26 then two codes will be found automatically on the system:

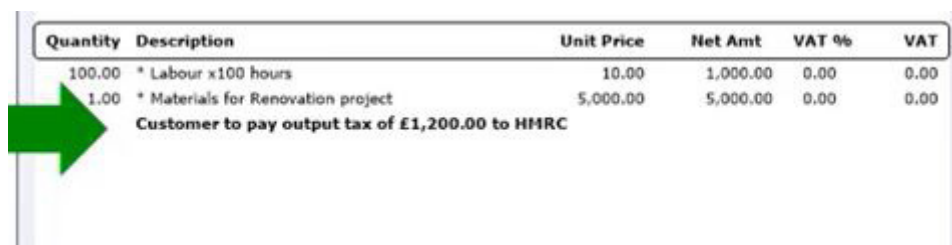
- T21 - domestic reverse charge at standard rate VAT (20%)
- T26 - domestic reverse charge at reduced rate VAT (5%)

(if these codes were already in use on the client's system, then the next available codes would have been used)



The image shows two side-by-side screenshots of the 'Edit Tax Code' dialog box in Sage 50. The left screenshot is for code T21, showing a rate of 20.00 and a description of 'CIS reverse charge - Standard rate'. The right screenshot is for code T26, showing a rate of 5.00 and a description of 'CIS reverse charge - Reduced rate'. Both screenshots have a green arrow pointing to the 'Link To' dropdown menu.

These codes by default automatically update the invoice to state it is under reverse charge when used:



The image shows a screenshot of an invoice table with the following data:

Quantity	Description	Unit Price	Net Amt	VAT %	VAT
100.00	* Labour x100 hours	10.00	1,000.00	0.00	0.00
1.00	* Materials for Renovation project	5,000.00	5,000.00	0.00	0.00

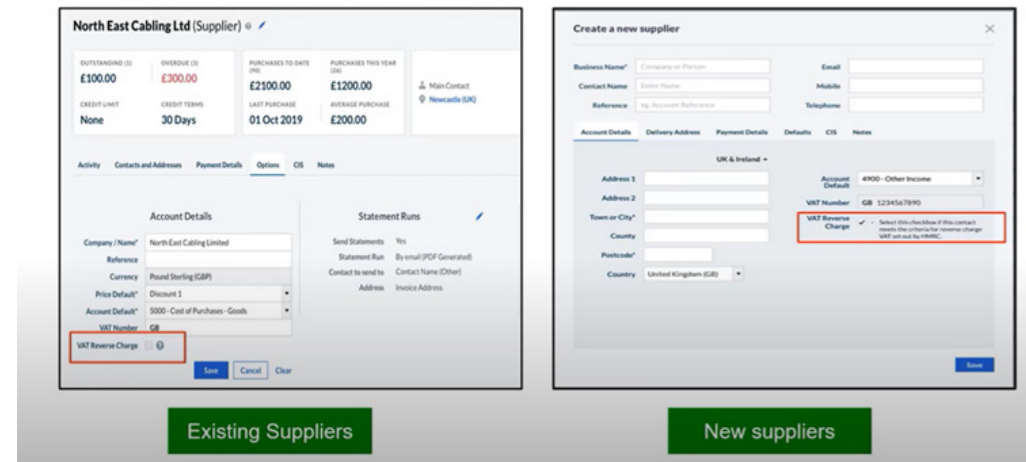
Below the table, it states: **Customer to pay output tax of £1,200.00 to HMRC**. A green arrow points to the 'Materials for Renovation project' line item.

Sage Business Cloud Accounting

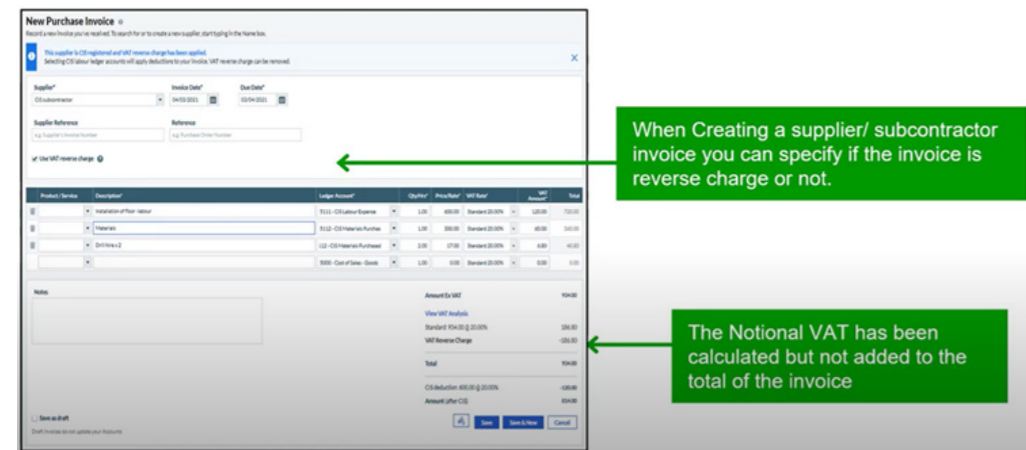
Suppliers

Ensure relevant tick box is selected for the supplier, this can be overridden on an invoice by invoice basis if necessary.

Suppliers where Domestic Reverse Charge applies



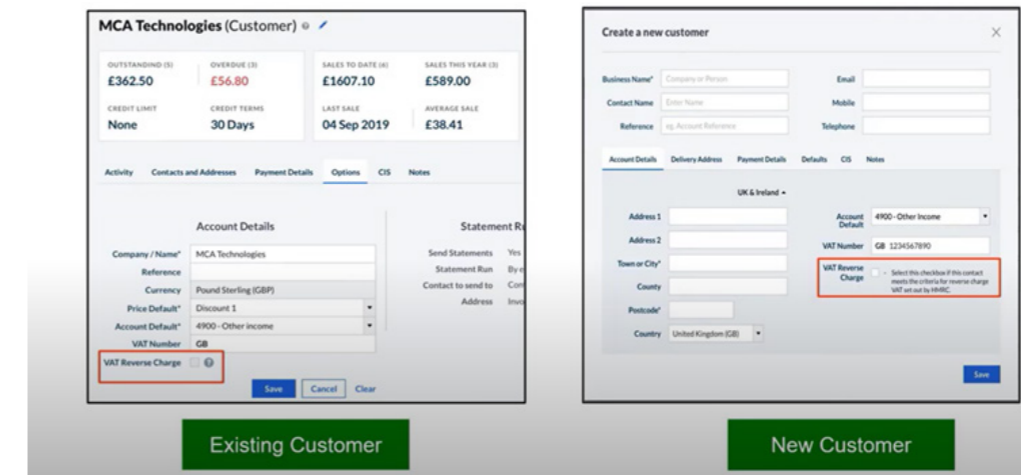
Supplier invoice where Domestic Reverse Charge applies



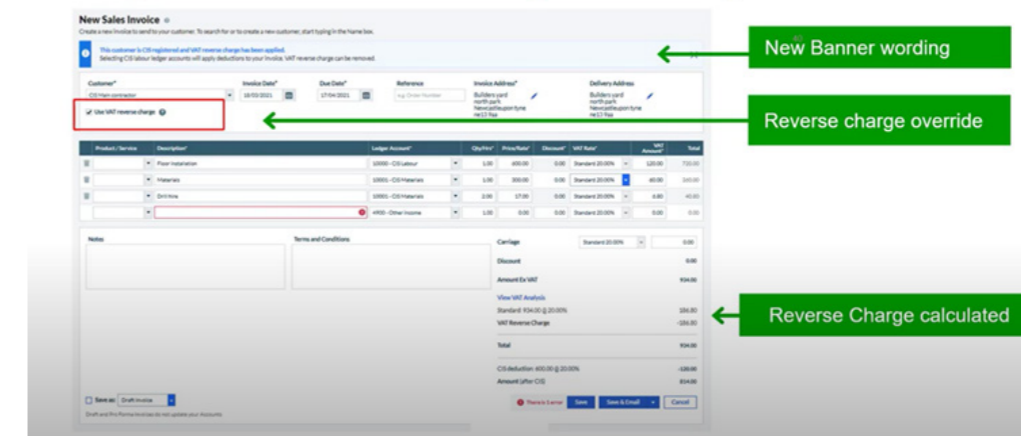
Customers

Ensure relevant tick box is selected for the customer, this can be overridden on an invoice by invoice basis if necessary.

Customers where Domestic Reverse Charge applies



Issuing a Domestic Reverse Charge invoice to your customer



For a full tutorial on this by Sage please visit: https://youtu.be/d5Myo0J_L7w